

# ***Fuel Card Interface***

## ***VIA Lietuva***

*Version 1.0*

<b>Author</b>	
<b>Reviewed:</b>	
<b>Approved by:</b>	

**Table of Contents**

<b>Fuel Card Interface</b> .....	<b>1</b>
<b>VIA Lietuva</b> .....	<b>1</b>
<b>Version 1.0</b> .....	<b>1</b>
<b>1 Purpose</b> .....	<b>3</b>
<b>2 Fuel Card Interface Overview</b> .....	<b>3</b>
<b>3 Requirements for Fuel Card providers</b> .....	<b>3</b>
3.1 Integration Method .....	3
3.2 Iframe to enter fuel card details .....	3
3.3 Required API Methods .....	4
3.3.1 Tokenize .....	4
3.3.2 Authorization .....	4
3.3.3 Bin .....	4
3.3.4 Capture.....	4
3.3.5 Refund.....	4
3.3.6 Void .....	4
3.3.7 Void by Order Id .....	4
3.3.8 Query Operations: .....	5
3.3.8.1 Inquire by FCP reference number .....	5
3.3.8.2 Inquire by Order Id (generated by CBO) .....	5
3.3.8.3 Settlement Status .....	5
<b>4 Examples of Payment Flows</b> .....	<b>6</b>
4.1 Fuel card payment without registered means of payment .....	6
4.2 Registration of a fuel card as a payment method for registered users .....	6
4.3 Payment of a Route Pass by a registered user with post-pay account .....	6
4.4 Start a trip by a registered user with post-pay account- Fee Reservation .....	7
4.5 End trip by a registered user with post-pay account .....	8

# 1 Purpose

The purpose of this feature is to describe the payment process using Fuel card interfaces.

## 2 Fuel Card Interface Overview

The fuel card interface is used exclusively for payment operations made with fuel card payment methods.

The system will integrate with three Fuel Card Providers (FCPs).

Some FCPs may not support authorization for reserving a fee at trip start.

This capability is configured in the Payment Manager interface, which acts as the client responsible for calling each FCP's APIs.

The communication between the two endpoints will happen over a secure communications channel.

## 3 Requirements for Fuel Card providers

### 3.1 Integration Method

- Integration must be implemented through a **RESTful API**.
- Fuel card providers must expose **API endpoints** that CBO will consume whenever a payment action is required.
- Fuel card APIs must support **tokenization**, meaning card details are tokenized by the FCP and never stored or processed as raw data by CBO.

### 3.2 Iframe to enter fuel card details

PCI-DSS compliance is the responsibility of the Payment Integrator. For this reason, the Fuel Card Provider (FCP) must provide a secure iframe to handle fuel card data entry.

When a user registers a fuel card for future use, the mobile application (MAPP) redirects the user to the FCP iFrame. All fuel card details are entered directly within this iFrame, ensuring that no sensitive card data is stored or processed by MAPP or CBO. The fuel card information remains exclusively within the Fuel Card Provider's secure environment.

Once the card details are entered and submitted, the FCP validates the data and generates a token. This token is then stored in CBO and used for all subsequent payment operations, allowing future transactions without re-entering fuel card details while maintaining PCI-DSS compliance.

When an unregistered user purchases a route pass, the mobile application also redirects the user to the Fuel Card Provider (FCP) iFrame to enter their fuel card details and obtain a token. Once the token is generated, the mobile application resumes the payment process using this token to complete the transaction.

### 3.3 Required API Methods

The following methods should be covered by each FCP:

#### 3.3.1 Tokenize

Converts sensitive cardholder data into a **secure token**.

Ensures PCI compliance by preventing storage of raw card numbers in your system.

Returns:

- A **token** (used for future transactions).
- The **masked card number** (e.g., \*\*\*\*\*1234).
- The **expiration date**.

Applications use this method when customers enter card details, so only the token, expiration date, and masked data are stored centrally on the CBO.

#### 3.3.2 Authorization

Authorizes a card transaction.

The capture parameter determines behavior:

- **N** → Funds are reserved only (authorization hold).
- **Y** → Funds are captured for settlement if approved.

If the FCP does not support a reserve, CBO will capture for settlement if approved.

#### 3.3.3 Bin

Retrieves information about the **Bank Identification Number (BIN)** of a card.

Identifies the issuing bank, card type, country, and service level.

#### 3.3.4 Capture

Captures funds from a previously authorized transaction.

Used when the initial authorization was performed with capture=N.

#### 3.3.5 Refund

Returns funds to the cardholder for a previously settled transaction.

Supports both full and partial refunds

#### 3.3.6 Void

Cancels a transaction before settlement.

Applicable to authorized or captured transactions not yet sent for settlement

#### 3.3.7 Void by Order Id

voids a transaction by referencing the Order ID originally sent by CBO.

This method is required when:

- The FCP did not return a response to an *Inquiry by Order ID* request
- The transaction status is uncertain and must be safely canceled

### 3.3.8 Query Operations:

#### 3.3.8.1 Inquire by FCP reference number

Returns transaction details, including settlement status, using the FCP-issued reference number returned in the authorization response.

#### 3.3.8.2 Inquire by Order Id (generated by CBO)

Returns transaction information using the Order ID assigned by CBO, rather than the FCP reference.

This is used when:

- An authorization or capture request was interrupted
- No response was received from the FCP
- CBO needs to verify the eventual status of the transaction

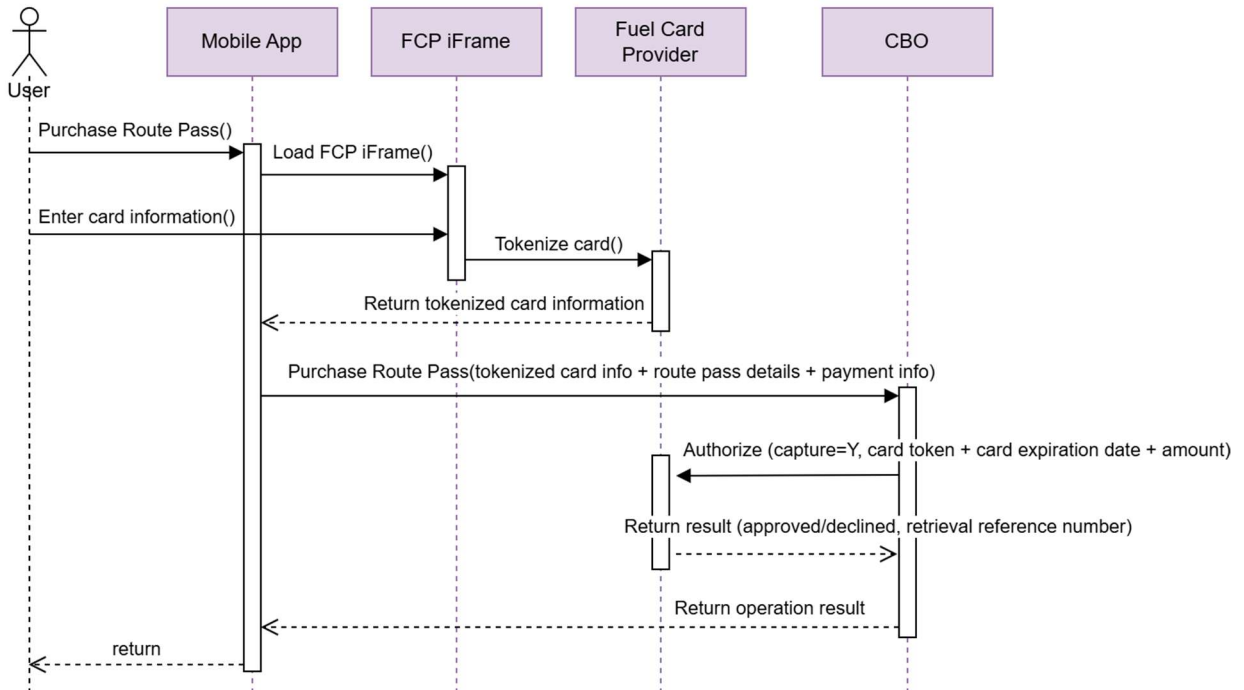
#### 3.3.8.3 Settlement Status

Provides the settlement status of all transactions submitted to the processor.

## 4 Examples of Payment Flows

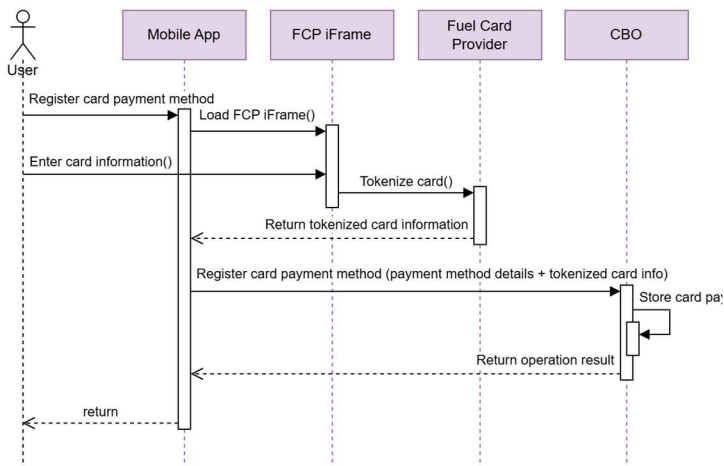
### 4.1 Fuel card payment without registered means of payment

Fuel card information must be entered for every purchase (no card is stored on the user account).



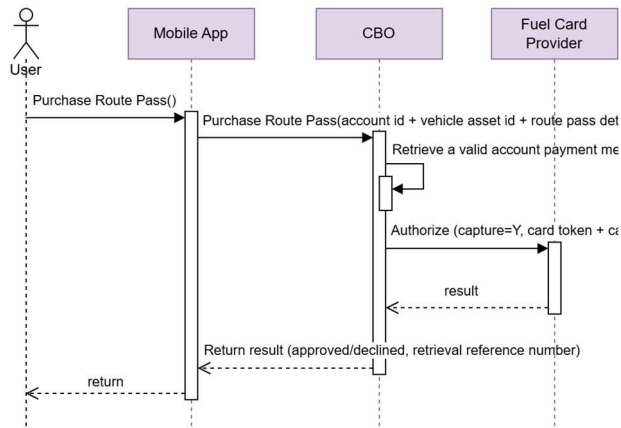
### 4.2 Registration of a fuel card as a payment method for registered users

Fuel card information is entered only once, and the tokenized card info is stored on the user account.



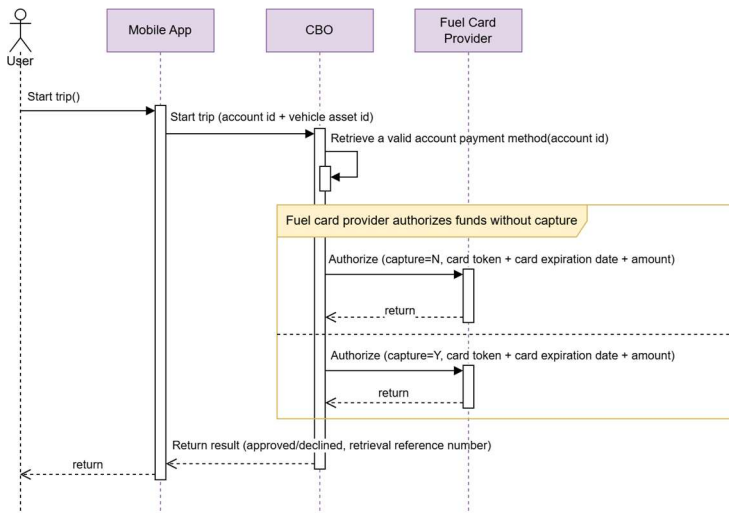
### 4.3 Payment of a Route Pass by a registered user with post-pay account

The user purchases the route pass using a stored fuel card payment method



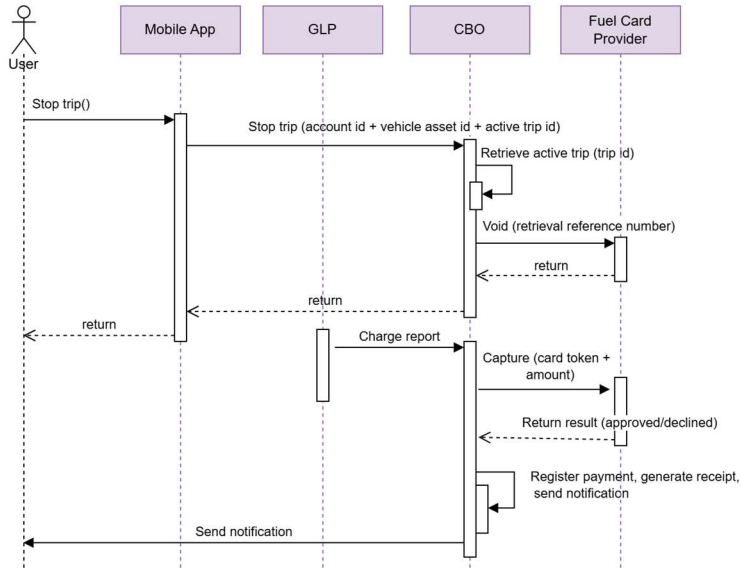
#### 4.4 Start a trip by a registered user with post-pay account- Fee Reservation

The user starts a trip and reserves funds (for the longest possible route) using a stored fuel card payment method.



### 4.5 End trip by a registered user with post-pay account

The user ends the trip, and the reserved funds are canceled, regardless of whether they were captured. CBO performs the payment of the toll amount using a stored fuel card payment method through a background process responsible of processing charge reports received from GLP



- END OF DOCUMENT -